

RECD MAR 17 1942

THE SIG EP

Dedicated to New Students at the
University of Kansas
by
Kansas Gamma Chapter of Sigma Phi Epsilon
1420 Ohio Terrace Lawrence, Kansas



J
A
Y
H
A
W
K
E
R

SIG EP FACTS AND FIGURES

Sigma Phi Epsilon Nationally

1. 72 chapters—in almost every state.
2. \$150,000 endowment fund for new houses.
3. \$50,000 scholarship loan fund.
4. Charter member National Inter-fraternity council.
5. First fraternity with life membership.
6. First fraternity with no assessments.
7. 1 of 4 frats owning its national headquarters.
8. 7 United States Senators are Sig Eps.
9. 14 United States Congressmen have been Sig Eps.
10. Sig Eps have been governors of 11 states.
11. Fastest growing fraternity in the world.

Sigma Phi Epsilon at K. U.

1. 45 Varsity lettermen.
2. 12 Varsity captains.
3. 3 All-Big-Six football players.
4. 6 All-Big-Six basketball players.
5. 2 All-American basketball players.
6. All intra-mural trophy winner.
7. 7 times Homecoming decoration winner.
8. 17 members Phi Beta Kappa, scholastic fraternity.
9. 9 members Schem, senior honor society.
10. 9 members Owl Society, junior honor society.
11. 11 members Men's Student Council.
12. 95 members honorary fraternities.
13. 4 Presidents, inter-fraternity council.
14. 14 members Scabbard and Blade, military fraternity.

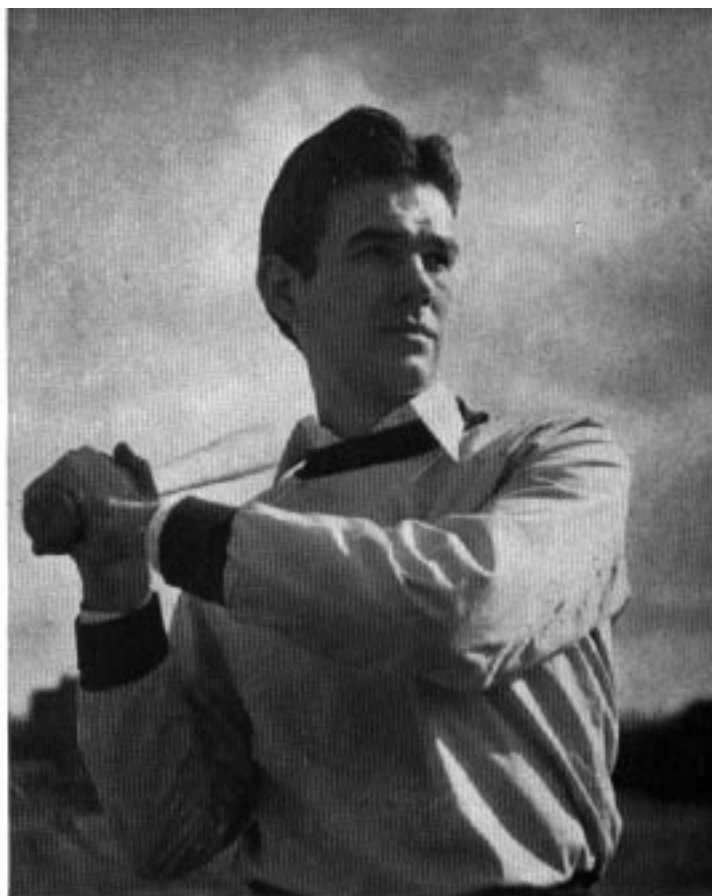
Sigma Phi Epsilon has three chapters in Kansas—Baker University, Kansas State College, and Kansas University—and at all leading colleges and universities.

Meet The President

"Knute" Kresie, prexy of Sigma Phi Epsilon has been playing baseball since he was big enough to swing a bat. A lover of sports, he's truly a man's man.

Incidentally Knute was chosen by all the athletes at K. U. to be president of the K-Club. And that's quite an honor in itself.

Bob Johnson, vice-president of our chapter is a regular on the K. U. basketball squad. He is known all over Kansas for his excellent sportsmanship and his famous smile. A graduate of Shawnee Mission High School, Bob is enrolled in the School of Education. While he is majoring in physical education, the School of Medicine may influence Bob to become a doctor — something he has always wanted.



Knute Kresie, President

Secretary of Kansas Gamma Chapter is Judson Goodrich of Topeka. Typical of Sig Eps, Judson is an activity man. He is a french horn player in the K. U. Band, a member of the Dramatics Club, and of the Pilgrim Fellowship. "Jud" was recently honored by election to Alpha Phi Omega, national service fraternity of former boy scouts. Incidentally he makes straight A's.

Sig Ep Leads the Way

Since its birth years ago in Richmond, Virginia, Sigma Phi Epsilon has been one of the leading national fraternities. With 72 chapters—in nearly every state—it has made more contributions to the fraternity world than any other organization. Everywhere Sig Ep is acclaimed for its high ideals and its worthy purpose. Is it any wonder that Sigma Phi Epsilon is the fastest growing fraternity in the world?

Sig Ep is a leader in scholarship, in athletics, in finances, in campus activities. So successful has it been that many Sig Ep ideas have been copied by a dozen other fraternities.

And on Mount Oread Sig Ep has always been a leader. Instead of putting undue emphasis on one phase of college life alone, Sig Ep believes in a well-balanced educational program: Scholarship first, then social life, athletics, music, and all the rest. That's why Sig Ep leads the way.

Parents' Day at Sigma Phi Epsilon



Sig Ep Leads Socially

Social life is an important part of college life. So Sigma Phi Epsilon plans a well-balanced social program for its members. Each year Sig Ep has an hour dance with each of the sororities, making it possible for a freshman to become acquainted with every sorority girl on the hill!

Frequent hour - dances (about every two weeks) give the boys a chance to bring their girls to the chapter house. The three formal parties of the year are climaxed in the spring when all the members of the neighboring Sig Ep chapters and the alumni return for a dance. Then of course the spring brings picnics and lawn parties.

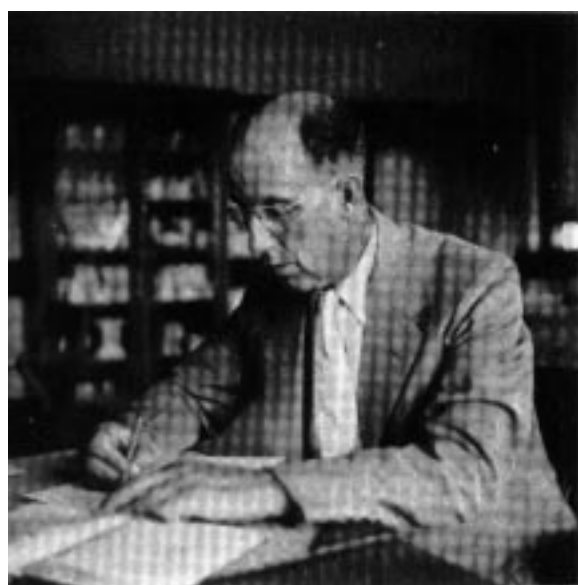
Is it any wonder that Sig Ep parties are known as the best on the hill, or that Sig Ep gets more invitations to the leading sorority parties than does any other fraternity?



Springtime is partytime for Sigma Phi Epsilon. The boys with their guests are partying in the Union Ballroom.

Time to fill your plate. The Sig Eps are having a buffet supper tonight. Harry Smith and Knute Kresie are helping their dates to olives.





Scholastic Adviser G. W. Smith has been a member of the K. U. Mathematics faculty for years. The boys call him a mathematical wizard. But he's not all math. One of the founders of Kansas Gamma Chapter of Sigma Phi Epsilon, Prof. Smith has always been a strong Sig Ep booster.

Sig Ep Leads in Scholarship

Scholarship first, the keystone of Sigma Phi Epsilon. While many other things are important, we believe that the fundamental purpose of a fraternity is to promote scholarship. We believe that every man should put forth the best that's in him and learn as much as possible during his college years.

In our fraternity freshmen must keep regular study hours each evening. Older men in the frat are always glad to help whenever a course offers difficulty. That's why the Sig Ep scholastic index is well above the average. And down through the years at K. U. Sigma Phi Epsilon has always been a scholastic leader. Instead of pledging a few boys for grades alone to make our grade index look better, we believe in having each boy do his part scholastically.

Nationally Sig Ep gives a scholarship award for the highest ranking chapter each year. And in our district (Nebraska, Baker, K. State and K. U.) a similar award is made.

Freshman scholarship award at K. U. this year went to Judson Goodrich, Topeka, a straight-A man. Jud had some close competition too.

Sig Ep Leads Financially

The Sig Ep plan of finance was started at Purdue University many years ago. It has been so eminently successful that a dozen other fraternities have copied it.

Sigma Phi Epsilon has no extra assessments. Instead of charging members ten or fifteen dollars extra for a party, for instance, all these incidental expenses are included in one low housebill. Our budget plans **in advance** for all these extras, so that a boy knows exactly what our fraternity will cost him.

Sig Ep was the first fraternity to have life membership—you pay no dues after you get out of school. So over a period of years this saving will mount up to several hundred dollars.

Sig Ep Karl Krueger pleases his public by giving a few autographs. The Kansas City Philharmonic Orchestra, under his able direction, gives a brilliant concert at K. U. each year. This summer brother Krueger is touring South America as a guest conductor under the auspices of the State Department.

Sig Ep Leads in Housemothers

Tremendously important to all Sig Eps is the housemother. Mother Wilson, a pal to all the boys, does a wonderful job of making the Sig Ep house a home for all the boys.

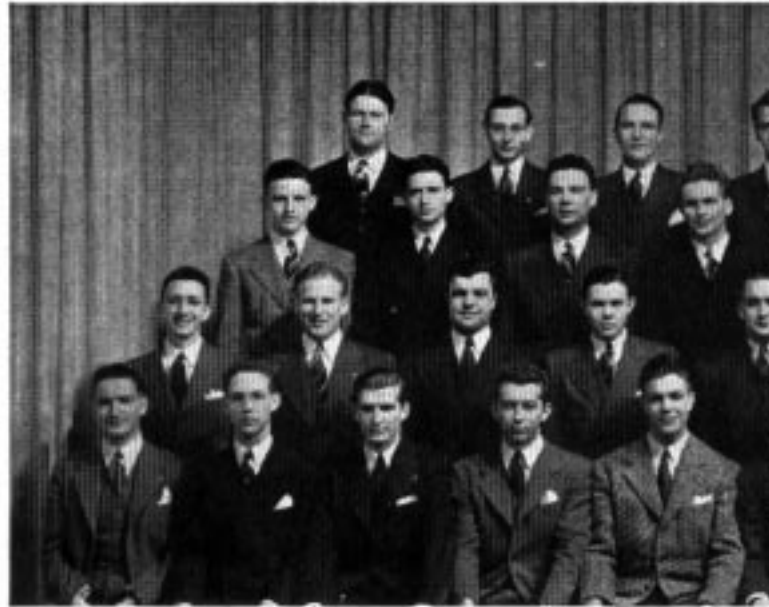
The widow of a prominent Kansas City physician, Mother Wilson knows a lot about keeping the boys in good health. Her formula seems to be good food and plenty of it.

Mother Wilson counsels the boys with their problems and is always glad to lend an ear to their troubles. She can always make you see the brighter side of things.

Incidentally, Mother Wilson is always ready to sit in on a hand of bridge with the boys. They say she could teach Culbertson a thing or two.



Meet the Boys



Fourth Row: White, Trueheart, Conway, Bundy, Stoddard,
Third Row: Williams, Cowgill, Edwards, Houghton, R. Stone
Second Row: Stevens, Wieland, B. Kuchs, Eley, H. Smith, K
First Row: K. Ruppenthal, Goodrich, Petty, Hines, R. John

Not in th
Beers, Buzzell, Coope
W. Kuchs, Martin, R. Sr



Turner, I. Stoneback, Elliott.
Stoneback, Fisher, Christman, Walter, Powell.
Loch, Teichgraber, Hayden, Fritz, F. Smith.
son, Kresie, Savely, Foust, C. Johnson, H. Ruppenthal, Widner.

Picture:
r, Davis, Fisk, Hoskins,
Smith, Thompson, Weltmer



A couple of pals and two good men to know. Jack Sands and Bob Johnson have helped to make the Jayhawker basketball squad what it is.

Football

In intramurals the Sig Eps produced the wonder team of the football circuit; it surprised everybody but the Eps. It suffered only one defeat during the regular season.

The Sig Eps were the first team to defeat the champion Betas in two years which they did by a 14-7 count. The Sig Eps also upset a powerful Phi Delt team 7-0. These were the only points scored against that team all season.

In the playoffs the Phi Delt turned the tables to set the Sig Eps back 6-0. (Two Sig Eps were sent to the hospital as a result of this game!)

Sig Ep Leads in Athletics

Since its establishment at K. U. Sig Ep has been an athletic leader. In proportion to its years Sig Ep has had more varsity lettermen than any other fraternity.

Every afternoon when classes are dismissed, you can find Sig Ep athletes working out with the varsity squads or playing with their fraternity brothers to bring the Sig Eps another victory on the intramural field.

Two Sig Eps, Paul Conway and Irvan Hayden, played on the varsity football team. On the freshman squad were Paul Turner and Walt Davis.

Hayden, from Atwood, always threw his passes with unerring accuracy. His touchdown heave against Villanova gave the Jayhawkers the only counter they made that night. And against the famous passing team, the Missouri Tigers, Hayden gave the Bengals a taste of their own medicine as he whipped across two touchdowns for Kansas. With a razzle-dazzle offensive up his sleeve for next year, Coach Gwinn Henry will be counting heavily on the Sig Ep roly-poly.

On the basketball front two Sig Eps were outstanding. Bob Johnson of Shawnee Mission played his second year on the nationally known Jayhawker five. He is a member of the quintet who placed second in the NCAA finals two years ago—a real veteran.

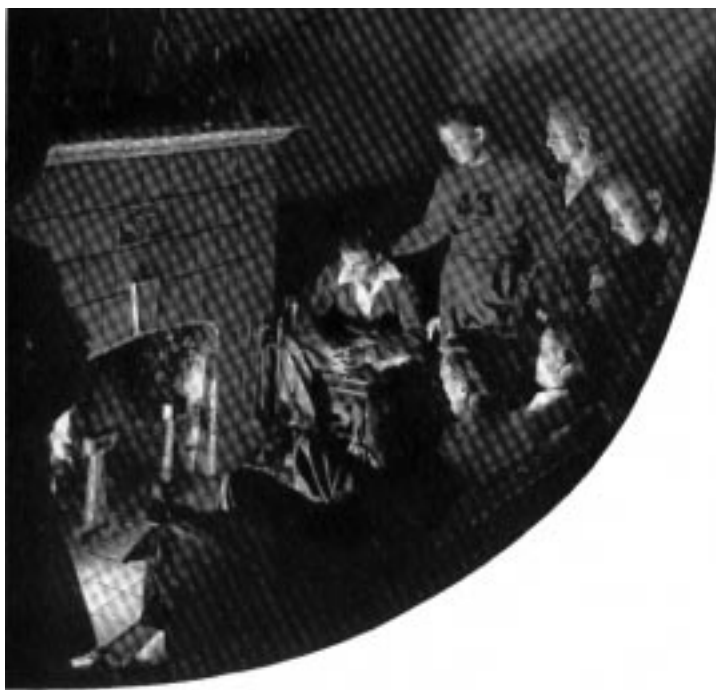
And speaking of basketball, you are barking right down Paul Turner's alley. He looked so good on a superb freshman team, the best to perform at K. U. in years, that coach "Phog" Allen already has his eyes on him as a potential starting forward for next year's team.

Softball saw the Sig Eps with a red-hot team on the diamond. During the regular season they lost but one game, to finish second and qualify for the play-offs. Being considered a cinch for at least the semi-finals, a muddy field tripped them up in the play-offs to prevent their winning the cup as they did two seasons back.

In softball, as in all the other sports, the Sig Eps have won their share of the trophies. As for the future, they will make it plenty tough for anyone who has championship aspirations, 'cause that's exactly what the Sig Eps themselves have in mind.

Always prominent in basketball, the Sig Eps furnished all five of the starting lineup for the K. U. squad a couple of years ago.





Fellowship around a fireplace! For years Sigma Phi Epsilon has been known as the friendliest fraternity on the hill. The boys say it is because they get together frequently to discuss mutual problems and to have a good time in general. There's always a log in the Sig Ep fireplace.

Sig Ep and the War

Our fraternity is facing the facts with regards to the military situation. We realize that this fall the University's enrollment may drop considerably. This means that many fraternities will lower their membership standards in order to get men.

Rather than do this Sigma Phi Epsilon has taken smaller quarters for next year. We sold our former house at a nice price and have ample means for building a new house when the national emergency is over.

But in the meantime we have a rented house which can be operated economically without having to take men of low calibre. And, incidentally, the Sig Ep housebill is \$15.00 per month **less** than most fraternity housebills at K. U.



Activity man Hal Ruppenthal leads a lusty cheer. Hal is a member of the Men's Student Council, the K. U. Band, and treasurer of Alpha Phi Omega, service fraternity. He is a staff photographer for the Jayhawker Magazine and was on the freshman debate squad and the Dean's honor roll.

Sig Ep Leads in Activities

Any place you look on the hill, you'll find Sig Eps doing their part in dozens of organizations. We encourage participation in groups that make for personality development. You'll find Sig Eps in the band, the orchestra, the dramatic club, the debate squad, various departmental clubs, and dozens of other activities. Sig Eps have been presidents of the Spanish Club, the French Club, the K-Club, and almost all other campus organizations. We've had more men on the Student Council than any other fraternity, taking into consideration our age at K. U.

Buffet supper at one of the sorority houses. Sig Eps predominate in the serving line, as they often do.

Time for a little recreation. Floyd Koch, Topeka, escorts pretty Reola Durand, Hoisington, to a dance.





Booster of Sigma Phi Epsilon is Judge Walter A. Huxman of the federal Circuit Court of Appeals. Brother Huxman is a member of Kansas Gamma chapter. He was formerly governor of Kansas.

• • •

Jovial Ben Hibbs, editor of the Country Gentleman was one of the founders of Kansas Gamma of SPE. Ben was the feature speaker at the University's 75th anniversary celebration last June.



Another Sig Ep was honored when all the graduates of the University of Kansas elected Justice Hugo Wedell of the Kansas Supreme Court as president of the K. U. Alumni Association.

This honor comes to Brother Wedell after many years of distinguished service to the State of Kansas, both as a member of the Supreme Court and in other capacities.

Next to visiting with brother Sig Eps, Brother Wedell likes to play baseball. He says there's no sport he enjoys quite so much.

• • •

Special recognition came to Sig Ep Bob Cowgill this year in the form of a fellowship in Chemistry at Rensselaer Polytech. of Rochester.



Another famous man to wear the golden heart of Sigma Phi Epsilon is Karl Krueger, conductor of the K. C. Philharmonic orchestra. Brother Krueger has degrees from Heidelberg, Vienna, and K. U.

Formerly conductor of the Seattle orchestra, Mr. Krueger has been guest conductor of most of the leading orchestras in this country and abroad. This summer he is on a conducting tour of South America under the auspices of the State Department.

• • •

Sig Ep honor man of 1941 is Glenn Elliott, former president, from Clay Center. Glenn was the highest ranking student in the pharmacy graduating class this year.



We pay tribute to the memory of the late Dr. James Naismith, beloved inventor of basketball. Dr. Naismith was a member of Kansas Gamma of SPE.

• • •

Climaxing his college years, former president Ray Buzzell chooses his bride. Rice is in order.





Photographs by Sig Ep Hal Ruppenthal